



THE SANGAMO *Farmer*

NOVEMBER/DECEMBER 2016



Sangamo Memories

*Advocating the Voice of Agriculture through Education
and Grassroots Legislation*

Phone: (217) 753-5200 • www.sangamonfb.org • farmbureau@sangamonfb.org
Springfield, IL • Volume MMXVI Number 6

Upcoming Committee Meetings & Events


November

6 th	Daylight Savings Time Ends
7 th	Governmental Affairs Committee Meeting, 6:00 p.m.
10 th	Women's Committee Fall Luncheon
14 th	Young Leaders Committee Meeting, 7:00 p.m.
21 st	Board Meeting, 7:00 p.m.
24 th -25 th	<i>Happy Thanksgiving</i> , Office Closed

December


3 rd -6 th	IAA Annual Meeting, Palmer House, Chicago
8 th	Cattle Clinic, 9:30-11:30 a.m. (See page 5)
12 th	Young Leaders Committee Meeting, 7:00 p.m.
12 th	Governmental Affairs Committee Meeting, 6:00 p.m.
19 th	Board Meeting, 7:00 p.m.
15 th	Women's Committee Meeting, 10:00 a.m.
23 rd -26 th	<i>Merry Christmas</i> , Office Closed
30 th -2 nd	<i>Happy New Year</i> , Office Closed

All events take place at the Sangamon County Farm Bureau unless otherwise noted.



AGRICULTURAL EDUCATION PARTNERSHIP
Logan, Menard, Sangamon County

The AgVenture Barn traveled to 9 schools and visited over 1,600 students. Thank you to all the volunteers and families that allowed us to use their animals. The AgVenture Barn has become a SCFB staple and something the students and teachers look forward to each year.



DIRECTOR ATTENDANCE - 2016		J	J	A	S	O	N	D	J	F	M
District 1	Wayne Benanti	X	X	X	-	-					
	Michael Kinner	n/a	n/a	X	-	-					
	Jason Kormnick	X	-	X	-	-					
District 2	Otto Rentschler	-	X	X	-	-					
	Randy Krone	X	X	-	-	-					
	Tyler Sloan	X	-	-	-	-					
District 3	Dale Edwards	X	X	-	-	-					
	Jason Pickrell (Ass't Sec/Treas)	X	X	X	-	-					
	Phil Sidles (Secretary)	X	X	X	-	-					
District 4	Bryon Muench	X	X	-	-	-					
	David Ray (Treasurer)	X	X	X	-	-					
	Paul Rice	X	X	-	-	-					
District 5	Cathryn Ayers	X	X	X	-	-					
	Larry Beaty (President)	X	X	X	-	-					
	Matt Heissingner	X	X	X	-	-					
	Marty Fairchild	X	X	X	-	-					
District 6	Colleen Carney-Harms	X	X	X	-	-					
	Ben Ladage (Vice-President)	X	X	X	-	-					
	Tim Seifert	-	-	X	-	-					
GAC Chair , Allen Entwistle	-	X	X	-	-						
MPR Chair , Diana Beaty	X	X	X	-	-						
YL Chair , Katie King	-	-	X	-	-						

THE SANGAMO FARMER	
Published bi-monthly by the Sangamon County Farm Bureau James Birge, Editor Periodical # 481320	Postmaster: Send Address Changes To: The Sangamo Farmer 2631 Beechler Court Springfield, Illinois 62703
SANGAMON COUNTY FARM BUREAU Office: 2631 Beechler Court Springfield, Illinois 62703 President: Larry Beaty Vice-President: Ben Ladage Secretary: Phil Sidles Treasurer: David Ray Asst. Secretary/Treasurer: Jason Pickrell	DIRECTORY FARM BUREAU STAFF Manager: James Birge, FBCM Assistant Manager: Ashley Kauffman Finance/Membership: Arika Mason Farm Bureau Tel. 217-753-5200 E-mail farmbureau@sangamonfb.org
Periodical Class Postage Paid at Springfield, Illinois	Individual membership fee of the Sangamon County Farm Bureau includes payment of \$2 per year for a subscription to the Sangamo Farmer.

CAROL FLECK'S

Meatloaf

INGREDIENTS

- 1 lb. ground round
- 1 lb. ground pork
- 1 sleeve of saltines
- 2 eggs
- 1 stick of butter
- 1 medium or large onion
- 1/4 c. ketchup
- 2 tsp. salt
- 1/2 tsp. pepper
- 1 tsp. garlic
- Parsley

DIRECTIONS

Crumble together meats and crackers. Sauté onion in butter and add to meat and crackers. Add eggs, ketchup, salt, pepper, and garlic. Mix thoroughly and place in 2 loaf pans. Bake for 1 hour at 350°F covered with foil. Uncover for the last 15 minutes, drain grease. Return to bake until browned.

Do you want to see your recipe featured in the next Sangamo Farmer? Send them to akauffman@sangamonfb.org or mail them to the office!

TEXT US!

Have a quick question? Text 217-753-5200!



Up to 25% off Car Rentals

Enterprise Rent-A-Car®
1-800-RENT-A-CAR
IFB Customer #ILFARM
enterprise.com/ilfb

Alamo®

1-800-462-5266
Contract ID #421770
alamo.com/offer/ilfb

National Car Rental®

1-800-CAR-RENT®
Contract ID #5706352
nationalcar.com/offer/ilfb

Hertz®

1-800-654-2210
CDP #27628
hertz.com

.. FOLD .. FOLD .. FOLD .. FOLD .. FOLD ..

Save 20% with
Choice Hotels®

Save 20% with
Choice Hotels®

CHOICE
HOTELS™

Advance Reservations Required
1-800-258-2847
IFB #00800614



Up to 20% off
"Best Available Rate"
with Wyndham Hotel Group

Advance Reservations Required
1-877-670-7088
IFB #8000002027



Great Wolf Lodge

Save 20% off Best Available Rate
At All 12 Locations

Wisconsin Dells, WI
Traverse City, MI • Williamsburg, VA
Niagra Falls, Canada • Grapevine, TX
Charlotte/Concord, NC
Sandusky, OH • Kansas City, KS
Pocono Mountains, PA
Cincinnati/Mason, OH • Grand Mound, WA
New England/Fitchburg, MA

Advance Reservations Required
1-800-905-WOLF
Corporate Code: ILLI617A

PRIDE^{Plus}

means the *pride* of
Farm Bureau®
membership *plus*
exclusive member-only
savings.



Benefits may change without notice
and some restrictions may apply

Sangamo Memories



Submitted by The Morrison's

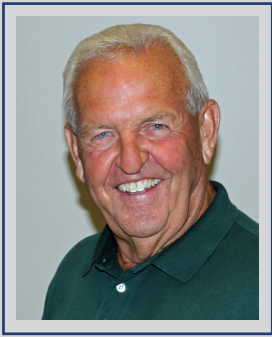
If you have time honored photos related to Sangamon County Farm Bureau we would love to see them. We can easily scan them to preserve the photo and to share with the rest of our members!



Albert Komnick, New Berlin :: Submitted by The Morrison's

Do you have any information about the photo on the front page? Contact the office with any information you may have!

President's Report



Larry Beaty

Farm Bureau has been put on the back burner as we are in the heat of harvest. As always our Sangamon County Farm Bureau staff keeps things going while our Board Members are working hard getting corn and soybeans harvested, fall tillage and fertilizer applied.

As I was shelling corn I thought of my father who farmed by himself and had livestock as well. He had a one row Woods Bros. corn picker and two flatbed wagons. He would fill the wagons and bring them into wire cribs and unload them. We always had teachers institute which was usually a long weekend with school being closed. I would then haul the corn and put it in the cribs for him. He always looked forward to the help. It would take my father two or three weeks to do what we do in a day. How farming has changed and not all for the better!

We will be preparing for IAA Annual Meeting coming up the first part of December. Look forward to seeing what all takes place this year in Chicago.

Be careful out there as you finish your fall work and stay safe.

Happy Holidays! God Bless you and our Great Country!

VOTE

2016

my voice. my vote.

Vote at your local polling place from 6 a.m. to 7 p.m.
on November 8th!

SAVE
THE
DATE

IAA
Annual
Meeting

DECEMBER 3RD - 6TH, 2016
CHICAGO, IL



PRIDE *Plus*

\$500 BONUS CASH



2016 FORD F-150



Take advantage of this exclusive special offer today.
Visit fordspecialoffer.com/farmbureau/il

\$750 BONUS CASH



2016 LINCOLN MKX

THE LINCOLN MOTOR COMPANY

Take advantage of this exclusive special offer today.
Visit LINCOLNSPECIALOFFER.COM/FARBUREAU/IL

GET FORD BONUS CASH

*Program 35296: \$500 Bonus Cash offer exclusively for active Arizona, Georgia, Illinois, Iowa, Kansas, Michigan, Mississippi, Missouri, and Tennessee Farm Bureau members who are residents of the United States. Offer is valid from 1/5/2016 through 1/3/2017 for the purchase or lease of an eligible new 2015/2016/2017 model year Ford vehicle not available on Mustang Shelby GT350/500, Mustang Boss 302, Mustang Special 50th Anniversary Edition, Focus RS and F-150 Raptor. This offer may not be used in conjunction with most other Ford Motor Company private incentives or AXZD-Plans. Some customer and purchase eligibility restrictions apply. You must be an eligible Association member for at least 30 consecutive days and must show proof of membership. Limit one \$500 Bonus Cash offer per vehicle purchase or lease. Limit of five new eligible vehicle purchases or leases per Farm Bureau member during program period. See your Ford Dealer for complete details and qualifications.

*Program 33413: \$750 Bonus Cash offer exclusively for active Arizona, Georgia, Illinois, Iowa, Kansas, Michigan, Mississippi, Missouri, and Tennessee Farm Bureau members who are residents of the United States. Offer is valid from 1/5/2016 through 1/3/2017 for the purchase or lease of an eligible new 2015/2016/2017 model year Lincoln vehicle. This offer may not be used in conjunction with most other Ford Motor Company private incentives or AXZD-Plans. Some customer and purchase eligibility restrictions apply. You must be an eligible Association member for at least 30 consecutive days and must show proof of membership. Limit one \$750 Bonus Cash offer per vehicle purchase or lease. Limit of five new eligible vehicle purchases or leases per Farm Bureau member during program period. See your Lincoln Dealer for complete details and qualifications.

Statement of Ownership

UNITED STATES POSTAL SERVICE® (All Periodicals Publications Except Requester Publications)

1. Publication Title: **The Sangamo Farmer** 2. Publication Number: **4 8 1 - 3 2 0** 3. Filing Date: **9/30/2016**

4. Issue Frequency: **Bi-Monthly (6 Issues)** 5. Number of Issues Published Annually: **6** 6. Annual Subscription Price: **\$1.00**

7. Complete Mailing Address of Known Office of Publication (Not printer) (Street, city, county, state, and ZIP+4®):
Sangamon County Farm Bureau: 2631 Beechler Court, Springfield, IL 62703

8. Complete Mailing Address of Headquarters or General Business Office of Publisher (Not printer):
Sangamon County Farm Bureau: 2631 Beechler Court, Springfield, IL 62703

9. Full Names and Complete Mailing Addresses of Publisher, Editor, and Managing Editor (Do not leave blank):

Publisher (Name and complete mailing address):
James C. Birge 2631 Beechler Court, Springfield, IL 62703

Editor (Name and complete mailing address):
James C. Birge 2631 Beechler Court, Springfield, IL 62703

Managing Editor (Name and complete mailing address):
James C. Birge 2631 Beechler Court, Springfield, IL 62703

10. Owner (Do not leave blank. If the publication is owned by a corporation, give the name and address of the corporation immediately followed by the names and addresses of all stockholders owning or holding 1 percent or more of the total amount of stock. If not owned by a corporation, give the names and addresses of the individual owners. If owned by a partnership or other unincorporated firm, give its name and address as well as those of each individual owner. If the publication is published by a nonprofit organization, give its name and address.)

Full Name	Complete Mailing Address

11. Known Bondholders, Mortgagees, and Other Security Holders Owning or Holding 1 Percent or More of Total Amount of Bonds, Mortgages, or Other Securities. If none, check box None

Full Name	Complete Mailing Address

12. Tax Status (For completion by nonprofit organizations authorized to mail at nonprofit rates) (Check one)
 The purpose, function, and nonprofit status of this organization and the exempt status for federal income tax purposes.
 Has Not Changed During Preceding 12 Months.
 Has Changed During Preceding 12 Months (Publisher must submit explanation of change with this statement)

PS Form 3526, August 2012 (Page 1 of 3 (Instructions Page 3)) PSN: 7530-01-000-9931 PRIVACY NOTICE: See our privacy policy on www.usps.com

13. Publication Title: **The Sangamo Farmer** 14. Issue Date for Circulation Data Below: **October 31, 2016**

15. Extent and Nature of Circulation

Newsletter

a. Total Number of Copies (Not press run)		1398
(1) Mailed Outside-County Paid Subscriptions Stated on PS Form 3541 (include paid distribution above nominal rate, advertiser's proof copies, and exchange copies)	160	
(2) Mailed In-County Paid Subscriptions Stated on PS Form 3541 (include paid distribution above nominal rate, advertiser's proof copies, and exchange copies)	1165	
(3) Paid Distribution Outside the Mails Including Sales Through Dealers and Carriers, Street Vendors, Counter Sales, and Other Paid Distribution Outside USPS®	0	
(4) Paid Distribution by Other Classes of Mail Through the USPS (e.g., First-Class Mail®)	0	
c. Total Paid Distribution (Sum of 15b (1), (2), (3), and (4))	1325	
d. Free or Nominal Rate Distribution (Sum of 15c (1), (2), (3), and (4))		
(1) Free or Nominal Rate Outside-County Copies Included on PS Form 3541	30	
(2) Free or Nominal Rate In-County Copies Included on PS Form 3541	25	
(3) Free or Nominal Rate Copies Mailed at Other Classes Through the USPS (e.g., First-Class Mail)	0	
(4) Free or Nominal Rate Distribution Outside the Mail (Carriers or other means)	0	
e. Total Free or Nominal Rate Distribution (Sum of 15c (1), (2), (3), and (4))	55	
f. Total Distribution (Sum of 15b and 15e)	1380	
g. Copies not Distributed (See Instructions to Publishers #4 (page 83))	18	
h. Total (Sum of 15f and g)	1398	
i. Percent Paid (15b divided by 15f times 100)	96%	

16. Total circulation includes electronic copies. Report circulation on PS Form 3526-X worksheet.

17. Publication of Statement of Ownership
 If the publication is a general publication, publication of this statement is required. Will be printed in the **November/December** issue of this publication. Publication not required.

18. Signature and Title of Editor, Publisher, Business Manager, or Owner
James C. Birge
 James C. Birge, Manager, Editor Date: **9/30/2016**

certify that all information furnished on this form is true and complete. I understand that anyone who furnishes false or misleading information on this form or who omits material or information requested on the form may be subject to criminal sanctions (including fines and imprisonment) and/or civil sanctions (including civil penalties).

PS Form 3526, August 2012 (Page 2 of 3)



Sangamon
County Farm Bureau
Foundation

Scholarship Winners

The objective of the Sangamon County Farm Bureau Foundation's Scholarship program is to provide general scholarships to eligible past high school students of Sangamon County Farm Bureau members. The Foundation offered five \$1,000 Scholarships for the Fall Semester 2016. Congratulations to all of our winners!



LAUREN PICKRELL

Lauren is the daughter of Joseph and Laura Pickrell. Lauren graduated from Tri-City High School. Lauren attends the University of Missouri-Columbia and majors in Health Science. Congratulations Lauren!



THOMAS GREEN

Thomas is the son of Donald and Karen Green. Thomas graduated from Glenwood High School. Thomas attends Illinois State University and majors in Actuarial Science. Congratulations Thomas!



MADELINE SALE

Madeline is the daughter of Daniel and Dena Sale. Madeline attended Glenwood High School. Madeline attends Miami University and majors in Biology. Congratulations Madeline!



RACHEL LOHMAN

Rachel is the daughter of Michael and Deanna Lohman. Rachel attended Pleasant Plains High School. Rachel attends Indiana University- Purdue University (IUPUI), and majors in sports management. Congratulations Rachel!



NATHANIEL MAYFIELD

Nathaniel is the son of Johnathan and Anne Mayfield. Nathaniel attended Athens High School. Nathaniel attends University of Illinois and majors in Agribusiness Markets and Management. Congratulations Nathaniel!

Look for the 2017 Scholarship information on our website late this winter! | www.sangamonfb.org



Katie King

Hello SCFB members! I hope everyone is having a safe and plentiful harvest! The young leaders are preparing for some exciting events after the crops are out.

On October 11th the YL group will be reaching out to the New Berlin High School Drivers Education classes. They will be talking with them about rural road safety. They will learn how dangerous the roadways can be if they're not on the lookout for farm machinery throughout the year. We try to reach out to high schools in the county during the peak season such as harvest and planting. We will have equipment for the group to see and experience firsthand how many blind spots and just how big the machines are.

We are planning our annual FFA Acquaintance day in January. We are hoping to have record turnout this year with early preparation. We are still in the works of sorting out possible locations for morning tours and then invite the groups back for lunch and a brief overview of what Farm Bureau is and how they can get involved.

The group is planning a team building event in St. Louis on the 4th and 5th of February. We plan to have a weekend getaway once things slow down for everyone. It has been a few years since the group has taken a trip to continue our education in different areas of agriculture. We plan to make stops along the way Saturday morning to a potential Ethanol plant to see just how our corn is processed and used and then to Budweiser to learn about the fermentation and brewing process.

The past year's ALOT participants have been heavily recruiting members to participate in this year's event held right here in Springfield. It is a great opportunity for all ages to network and meet people from across the state while growing themselves in many areas.

If you are interested in any of these events or would like to join the YL group, please contact the SCFB office at 217-753-5200. We hope you all have a great holiday season!

YOUNG LEADERS



Diana Beaty

As I write this article we are heavily in the mist of harvest. Crops have been bountiful and the weather great. Like all my fellow farmers praying we get a bounce in the markets soon!

This time of year is slow for our committee with everyone busy with harvest activities, Farm Bureau activities have slowed down quite a bit. We will wrap up the year with a care package shipped off around the holidays and our Annual Trip to the IAA Annual Meeting in early December.

Work on plans for next year's activities will begin soon after harvest has wrapped up. Plans are in the works for our 2nd Foundation Trivia Night in early March. This event will be held at Ben Ladage Auction House in Auburn. Watch your Sangamo Farmer in early 2017 for more details.

A reminder to get out and VOTE on November 8th! As the year comes to an end, I would like to take this time to THANK all those volunteers who have helped in some way this past year to help make all our Sangamon County Farm Bureau Activities a success, without you we would not be able to accomplish all we do. Also a huge thanks to our Staff, Jim, Arika and Ashley, you guys are amazing and a HUGE part of our success!

My Blessings to all as the Holidays approach!

MEMBER & PR



Paul Rice

As we get ever closer to the Illinois Farm Bureau Annual Meeting in December, preparations are underway to finalize all the proposals for Illinois Farm Bureau policy changes. Sangamon County has submitted one policy proposal and one bylaw change. The policy submittal would encourage our affiliates to do more to offer E85 at their fuel stations. The bylaw submittal would require candidates for the Illinois Farm Bureau Board of Directors (including President and Vice-President) to notify Illinois Farm Bureau of their candidacy no less than 60 days before the first day of the Illinois Farm Bureau Annual Meeting. This requirement would allow the delegates who vote on the candidates to have the opportunity to fully vet the candidates in order to make a sound choice regarding who will be representing them for the next two years.

There are always a considerable number of policy submittals for the 450 delegates to debate and consider for policy. This is the lifeblood of the organization and provides the steering wheel that guides the policy stance and direction for the upcoming year. It's a demonstration of democracy in its purest form. I always marvel at the process to forge the direction of Farm Bureau and its principles.

POLICY DEVELOPMENT





Cattle Clinic

DECEMBER 8, 2016 :: 9:30 AM - 11:30 AM

Learn more about the upcoming vet feed directive and ways to improve your cow herd.

Stacey Funderbunk, Countryside Veterinary Service :: Travis Meter, U of I Extension
Reid Blossom, Illinois Beef Association :: Representatives from Zoetis, Mix 30 & Umberger Show Feeds
will be available for consultation afterwards in the lobby :: Lunch will be provided.

CALL TO MAKE RESERVATIONS : 217-753-5200 :: OR EMAIL: akauffman@sangamonfb.org



The Bureau According to Jim



Jim Birge

During our modern daily lives, we've become all too accustomed to the evil hatred of those who seek to kill Americans and people of many other nations. This war that many nations, including our own, find themselves fighting is as important to win as was the many wars of

the past. Just because this war doesn't look like wars of the past doesn't mean we should see it as less important.

Before writing this column I reflected on this very subject and tried to understand the magnitude of events of the past and how current events compare. That brought me to thinking about the upcoming 75th anniversary of the bombing of Pearl Harbor on December 7, 1941. Even though I wasn't a part of this world at the time, I've known people who were there to witness the horror and know of some who never made it home from it.

I began to wonder what Farm Bureau did or said in reaction to that day and the days that lied ahead. So I dug into our archives and found the January 1942 Sangamo Farmer looking for answers. What I found was inspiring and shows the patriotism of the organization and its members.

The American Farm Bureau Federation Annual Meeting was held in Chicago just after the attack on Pearl Harbor. A telegram was sent from the delegation to President Roosevelt and several policy resolutions were passed pertaining to this horrible event.

The telegraph to the President read: "The men, women, and youth on America's farms herewith assure you of their full response to your call to arms.

"We here and now pledge to you the fullest measure of our support. We dedicate ourselves and that which we possess to the righteous cause of a united people.

We, as one, with God's help, will march with you against the common foe.

"American Farm Bureau Federation
Edward A O'Neal, President

The delegates adopted several resolutions on the matter. Quoted briefly below is part of the number one resolution adopted:

"With all efforts toward peaceful negotiation exhausted, and seeking no selfish gain, America finds herself at war. Overnight our program of all out defense has been displaced by actual warfare. America's destiny of Christian leadership in world affairs is defied by an imperialistic rising sun and a contorted cross.

"An America at war demands the untiring labor and sacrifice of all. We must devote renewed energies to the battle of production. Any lagging by industry, by labor or agriculture must not be tolerated.

"We dedicate ourselves, our fortunes and our sacred honor to the cause. We commit ourselves to the stern labor and unselfish sacrifice required if our hallowed Christian heritage is to endure."

As the 75th anniversary of the bombing of Pearl Harbor approaches, we must all unite once again under these words to ensure that the people who've sacrificed for our freedoms did not do so only for us to squander them in the future but to carry on the pride and patriotism of our great nation. We must fight modern battles with tenacity and gritty determination and we must right the atrocities that we as people inflict upon each other all too often.

Until next time, I wish everyone continued safety as many continue to complete harvest and conduct fall field work. I also want to wish everyone joy and personal reflection as we enter into the holiday season. Be sure to thank the Lord for all we're blessed with and remember those who serve us abroad to protect our way of life and our freedoms. See you next issue.

LET PRAIRIELAND FS BE YOUR SEED SUPPLIER OF CHOICE THIS YEAR!

Contact your local Prairieland FS Crop Specialist to find out about Early Booking and Ag Finance Savings today!

www.prairielandfs.com



Allen Entwistle

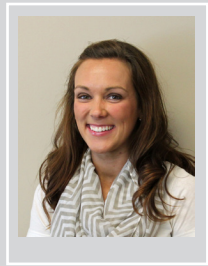
As we roll along harvest, it is at times easy to lose ourselves in the work and forget a little bit of our awareness of the goings on in the rest of the country and world. From the perspective of legislative and political activity there's still plenty going on that needs our attention.

For the past few weeks, we've been encouraging our members to do a couple things. First is to vote in the upcoming election. The stakes couldn't be higher for the White House and members of Congress. No matter what candidate you choose to support, there's a lot riding on this one. So vote early if you can, but if not, at least go to the polls and make your voice heard on election day.

The second thing we're encouraging members to do is to find a few minutes to send emails to their Congressman and Senators in support of passing TPP. Despite some strong statements to the contrary, there is still a chance TPP could come to a vote in a lame duck session. So, the more our elected leaders hear our perspective on TPP, the better. You can do this easily from your smartphone or tablet right from your combine or tractor. Just go to www.ilfb.org click on the Legislative Action Center and then on the red and white "Support TPP" button. A letter is already designed for you to send or if you choose you can customize one of your own. A few more clicks and it's all done and sent to your Congressman and Senators.

My best to all of you as you continue to work the long hours to get through harvest and fall field work. Be safe.

GOVERNMENTAL AFFAIRS



Cassie Bennett

I hope this letter finds everyone well! Women's Committee has kept busy this fall thus far. A few members helped with the Ag-Venture Barn tour in mid-September. We assembled healthy harvest bags and sent them out to local farmers in the area. I know my farmer really appreciated his. I enjoyed getting out there and meeting other farmers.

Our annual Fall Luncheon is November 10th and we are switching it up a bit with a paint party this year that I am quite excited about! The ladies will have the opportunity to paint a fall or winter canvas instructed by "The Painted Ladies". Don't forget to register if you haven't already. Have a safe harvest!

WOMEN'S



Matt Heissinger

I hope this issue finds everyone in good spirits. Harvest is in full throttle and the weather has been pretty good to us so far. Corn dried down fairly quick in the fields this harvest with unseasonably warm weather during the end of September. Early October brought some much need rain for pastures and cover crops. I found myself still trying to put up hay two weeks after the first corn field was shelled and I'm still

trying to find time to get cover crops planted. It's such a busy time of year, so please take time to rest and be safe!

Cattle prices are below \$1 a pound and corn is below \$3 dollars. I look back around late June when we didn't have any rain for 3 weeks. It was dry! The weather man was projecting a hot and dry summer. Corn was \$4.50, beans over \$10.00. Boy, I thought 5 or 6- dollar corn is coming. Just when you think you got it figured out, the rains came and corn dropped to \$3.00. Why did I listen to the weather man? I laugh at myself sometimes, as my grandpa and dad would say when they went through times like these, "next year" now that's what I'm saying "next year". For those of you that took advantage of the early \$4 corn this year will find themselves in pretty good shape. Yields are very good across the board. A good indicator of that is seeing a lot of corn being put on the ground at the elevators.

As for any committee action, we are putting off any meetings until harvest is over and everyone is caught up and rested. Until then, we will keep the motors running.

MARKETING

PRIDE^{Plus} *Pride in membership plus savings.*

**Save \$500 - \$1,000
On Cat® Skid Steer Loaders**



Sangamon County Farm Bureau
2631 Beechler Court
Springfield, IL 62703



MyersRice
Auction & Realty

Real Estate Brokerage • Auctions • Farm Management

Paul Rice

Auctioneer/Broker

A Certified Estate Specialist Auctioneer

www.myersrice.com



115 Chatham Rd. • Springfield, IL 62704
Office: (217) 787-3200 • Toll Free: (888) 600-FARM

**SANGAMON VALLEY
SURVEYING
& CONSULTING P.C.**

Hans B. Distlehorst, PLS

PHONE & FAX: (217) 629-7773

CELL: (217) 652-6772

hans.svls@comcast.net

ALTA Surveys • Boundary Surveys

Construction Layout • Topographic Mapping • Subdivision Planning

Estate Land Divisions • Elevation Certificates



Providing Quality Land Improvement

All fields are **GPS** installed
Mapped using **Landrain** System.
Mains are trenched in and laterals are plowed in.
Tile design map provided

**We work closely with each individual to insure all
your specific needs are satisfied.**

CALL TO SCHEDULE AN APPOINTMENT

MALTBY EXCAVATING INC.

1206 North 000 East Road Pawnee, IL

www.maltbyexcavating.com

Ryan Maltby 217-962-1452

