



THE SANGAMO *Farmer*

NOVEMBER / DECEMBER 2018



*Advocating the Voice of Agriculture through Education
and Grassroots Legislation*

Phone: (217) 753-5200 • www.sangamonfb.org • farmbureau@sangamonfb.org

Springfield, IL • Volume MMXVIII Number 6


Upcoming Meetings & Events

NOVEMBER


8th Women's Committee Fall Luncheon 10:00 a.m.
 12th Young Leader Committee Meeting, 6:30 p.m.
 13th CLA Estate & Recession Seminar (See page 5) 8:30 a.m.
 15th Member & PR Committee Meeting 5:00 p.m.
 19th Board Meeting, 7:00 p.m.
 22nd Thanksgiving (Office Closed)
 23rd Day after Thanksgiving (Office Closed)

DECEMBER

1st-4th IAA Annual Meeting (Chicago)
 3rd Governmental Affairs Committee Meeting 6:00 p.m.
 10th Young Leader Committee Meeting, 6:30 p.m.
 20th 100th Anniversary Special Board Meeting 5:00 p.m.
 24th -26th Office Closed for Christmas
 31st Office Closed for New Year's Eve



AGRICULTURAL EDUCATION PARTNERSHIP
Logan, Menard, Sangamon County



The Ag Education Partnership and Sangamon County Farm Bureau work jointly each spring and fall to travel to area schools to teach students about animal agriculture.

Shown here is Aggie, the therapy dog from Taylorville High School's agriculture department. Aggie and Taylorville ag student volunteers made great additions to the program and were a big hit with the kids.

DIRECTOR ATTENDANCE - 2018/2019		A	S	O	N	D	J	F	M	A	M
District 1	Brent Johnson	-	-	X							
	Michael Kinner (Treasurer)	X	-	X							
	Anna Stone	X	-	X							
District 2	Otto Rentschler	X	-	X							
	Randy Krone	X	-	X							
	Kevin Foran	X	-	X							
District 3	Dale Edwards	X	-	X							
	Jason Pickrell	X	-	X							
	Phil Sidles (President)	X	-	X							
District 4	Mike Borgic	X	-	X							
	Adam Bailey (Ass't Sec/Treas)	X	-	X							
	Pam Neuman	X	-	X							
District 5	Cathryn Ayers (Vice-President)	X	-	X							
	Diana Beaty (Secretary)	X	-	X							
	Matt Heissingner	X	-	X							
	Marty Fairchild	X	-	X							
District 6	Colleen Carney-Harms	X	-	X							
	Ben Ladage	X	-	X							
	Vacant										
GAC Chair , Allen Entwistle	X	-	-								
M&PR Chair , Janet Edwards	X	-	X								
YL Chair , Stephen Prather	X	-	X								
Women's Chair , Cassandra Bennett	X	-	-								
Policy D. Chair , Jason Komnick	-	-	X								

THE SANGAMO FARMER

Published bi-monthly by the
Sangamon County Farm Bureau
 James Birge, Editor
 Periodical # 481320

SANGAMON COUNTY FARM BUREAU
 Office: 2631 Beechler Court
 Springfield, Illinois 62703
 President: Phil Sidles
 Vice-President: Cathryn Ayers
 Secretary: Diana Beaty
 Treasurer: Michael Kinner
 Asst. Secretary/Treasurer: Adam Bailey
 Periodical Class Postage Paid at Springfield, Illinois

Postmaster:
 Send Address Changes To:
 The Sangamo Farmer
 2631 Beechler Court
 Springfield, Illinois 62703

DIRECTORY FARM BUREAU STAFF
 Manager: James Birge, FBCM
 Outreach & Comm. Specialist: Vacant
 Finance/Membership: Arika Mason
 Farm Bureau Tel. 217-753-5200
 E-mail farmbureau@sangamonfb.org

Individual membership fee of the Sangamon County Farm Bureau includes payment of \$2 per year for a subscription to the Sangamo Farmer.



Phil Sidles

As I write this the harvest rush is winding down. Harvest truly is a marathon and not a sprint. It is one of my favorite times of year with plenty of work to be done for sure. On our farm it is a team effort for sure, it takes effort from everyone to have a successful harvest season. Much like this organization, when our membership, directors, committees and staff all work together our accomplishments are endless. Agriculture will face many challenges in the years to come as it has in the past, but I believe it will take a unified front to meet these challenges head on. Many of the decisions made today will affect generations to come. I look forward to the upcoming Illinois Farm Bureau annual meeting, to put these decisions into motion. Creating policy for the organization is one of the most rewarding outcomes as a leader of the SCFB. It paves the way of the future. It is a humbling experience to watch a conversation in a small committee grow to approval from the board, on to resolutions, to the floor of delegate session at our state-wide annual meeting, then hopefully becoming part of our policy book and maybe even into state law.

Much like farming, it is process with many different pieces that require preparation throughout all seasons. So, as we come closer to the finish of another year we are already preparing for the next year to come, the same is true in the Farm Bureau. We are preparing for the year to come with ambition and excitement. Looking forward with new events and activities that will keep farming and agriculture at the forefront of everything we do. As always thank you for your continued support and hopes of a great new year.

The Bureau According to Jim



Jim Birge

A year that's been 100 years in the making is coming toward a close. But there's still one more date on the horizon that has yet to pass, the official date of our 100th anniversary. That day is December 20, 2018.

Throughout this year you and I have shared moments about the history of our Farm Bureau, and as it all begins to come to a close I've garnered an even greater respect

for the people and the organization that worked so hard to get us to where we are. As you know, I'm a bit of a Farm Bureau history buff and never really thought I'd be surprised by what this year brought. But I was wrong. There have been many surprises and I'm grateful that I have been able to share them with members and vice versa.

So as we close out this milestone year, it's time for us to continue the legacy we've been given. 2019 here we come!

Committee Reports



Janet Edwards

Before sitting down today to start writing this month's article, I looked back to my first article written last December. Boy, what a difference a year makes. Last year we were just finishing up harvest around the end of November and it was a LONG harvest. This year, God has been good to us here in Central Illinois and by the time this publication comes out, most will be done with the 2018 harvest. Yes, we have had "three seasons" in one week around here but we do live in Illinois, don't we?

In the Farm Bureau year, it is now time to get started planning all of our meetings for the coming year. That being said, the Member and PR committee met on October 29th to

MEMBER & PR

start making plans for upcoming member programs.

The first activity planned for our members is a FLU CLINIC to be held at the Farm Bureau building on Monday, November 5th from 5 to 6 p.m. If you have not received your flu shot yet, here is a time that you can come to the office and get that taken care of.

December brings us to the IAA Annual meeting held in Chicago. Here, the Young Leaders committee and the Member and PR committee join together to take a team or two to participate in the IAA Foundation Trivia Night. This year, for those of you attending, the theme is "Tailgates & Trivia". If you are attending IAA Annual meeting and would like to participate on a team, please let Arika, Stephen Prather or myself know and we will get you on a team. "We plan on bringing the "Spirit" award home again."

Committee Reports



Allen Entwistle

just to do their part to get all the commercials to stop!

In reality, it's a great honor, as citizens of a free country, to be able to have a choice in those that represent us in government. Citizens of other countries would likely cherish seeing all those commercials as a reminder that they have a true vote and can make a difference. That being said, I'd still rather see a bit fewer of them.

Now that the elections are over, our committee and the entire Farm Bureau organization will be quick to work at building relationships with newly elected officials, and continue to engage our issues with all of our officials. And there won't be any shortage of issues to talk about. For example, we still don't have a Farm Bill completed, but through the pressure we've created from a recent action request, I'm hopeful that we'll be able to get the process in high gear.



Cassie Bennett

The ladies have planned a wonderful fall luncheon this year with yet another awesome project with The Painted Ladies, which I personally always look forward to. We have planned another wonderful meal for The Ronald McDonald house December 13, if you're interested in joining us be sure to call the office and sign up. If you are planning to attend the IAA meeting be sure to look for the women's committee Instantpot and bid on it! Until next time have a wonderful Thanksgiving and Christmas.

Harvest is finally over for folks and that means it's time for mid-term elections. What an election season. Like usual, our TVs, radios, newspapers, and social media are nothing but one campaign ad after another. Sometimes I wonder if people turn out to vote

GOVERNMENTAL AFFAIRS



Matt Heissinger

call our office and let them know. They'll be glad to bring it to our committee to consider.

Have a wonderful holiday season and as always be safe in all you do.

Hello members! The Marketing Committee has been taking time off for harvest to let ourselves and everyone else get their work done. Now that harvest is mostly over, we'll be getting ramped up again soon to plan some interesting and educational programs. If you have an idea of a subject or project our committee could consider, please

MARKETING



Stephen Prather

Tractor Drive and the Ag-Stravaganza event.

We are excited to have YL members representing Sangamon County at the Illinois Farm Bureau Annual meeting in Chicago this December followed by the Young Leader conference in Peoria this coming February. As we attend functions at the annual meeting in Chicago, we'll be cheering on Sangamon County's own Mike Borgic as he competes in his final young leader discussion meet. Good luck Mike, we're all behind you and know you will make us proud.

Each year our Young Leaders continue to look towards the future and wonder what the Ag industry will be like in the future with ever changing policy, industrial structures being erected in rural areas, farmland values, and adopting technology on the farm that will add value. We as Young Yeaders are excited about what the future might hold and how we can be a part of the solutions to tomorrows problems.

Please join us at our next regular meeting on November 12th at the Sangamon County Farm Bureau office. We're always looking for new potential members to be a part of our activities.

Everyone on our Young Leaders Committee hopes everyone had a safe a productive harvest this year. Even with all the busy harvest activities, our committee continues with planning programs to benefit members. Currently we are busy developing and implementing our plans for next summer's Antique

YOUNG LEADERS



PLANT THE SEED FOR A SECURE FUTURE.

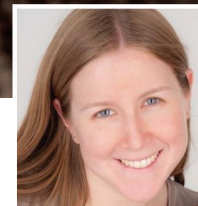
Estate & Succession Planning and Year End Tax Planning Program

On Tuesday, November 13th the Sangamon County Farm Bureau is partnering with CliftonLarsonAllen to present a program on estate planning, succession planning, and the impacts of the recent tax reform. The program will be held at the Sangamon County Farm Bureau Office at 2631 Beechler Court in Springfield, Illinois. The welcome will begin at 8:30 am and the program will conclude by 10:30 am.

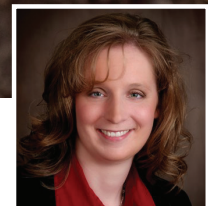
Proper planning is key to the success of any endeavor. However, planning can be an overwhelming task. This joint session presented by CliftonLarsonAllen and Sangamon County Farm Bureau will help Farm Bureau members address challenging planning topics such as tax reform, as well as succession and estate planning.

Through this program you will learn to understand options available to effectively transfer a farm operation to the next generation or other successor. You will also learn to evaluate tax planning opportunities based on the current tax code and its anticipated impact on your return.

CliftonLarsonAllen has extensive experience working with agricultural clients and will supply important information to Farm Bureau members at the November 13th session. These topics will be covered by Vanessa Bechtel and Kelly Hardy from CliftonLarsonAllen.



Vanessa Bechtel



Kelly Hardy

With more than fifteen years of experience, Vanessa Bechtel serves clients on tax consulting, planning and compliance engagements. While she serves a broad range of clients as a Certified Public Accountant, Vanessa focuses on agribusiness ranging from producers to input and implement dealers, as well as elevators and coops.

Kelly Hardy is a Principal in the Princeton, Illinois office and focuses on serving commercial enterprises and their owners. Kelly has 15 years of experience and assists clients with their tax planning, compliance, and consulting needs, as well as addressing technical taxation matters. She specializes in providing services to agribusiness, manufacturers, and commercial enterprises.

For reservations and for more information, contact the Sangamon County Farm Bureau office at 217-753-5200 or amason@sangamonfb.org.

**Tuesday, November 13
8:30-10:30 am
Sangamon County Farm Bureau Office 2631
Beechler Ct | Springfield, Illinois.**

Don't miss your opportunity to learn about these important topics!



PrairieLand FS Declares Patronage to Farm Bureau Members

PrairieLand FS Board of Directors has declared a high level of patronage refunds, \$3.8 million, to be paid out to Farm Bureau “M” members for 2018 fiscal year purchases. This year’s patronage payout will be paid 60% cash and 40% Class E stock.

The company’s performance in fiscal year 2018 was strong as is the balance sheet, which allows the company to pay out a high cash percentage.

“The diversification of our co-op has allowed us to manage through tough years in one area while generating profits in another area,” says Keith Hufendick, PrairieLand FS CEO. “Lower grain prices have caused farmers to cut back input purchases, but the retail side of our business has shown continued growth this past year due to an increase in customer base.”

Individual rates of payout are determined by product line and will be similar to last year’s rates.

Individual checks will be processed and mailed on November 15th. A full breakdown of payment rates will be included with the check and member’s individual payment record.

In addition to the patronage, the board also approved \$2,100,000 of stock revolvment to be mailed in January 2019. This keeps us on a path to stay below a ten year revolvment of stock. This redemption will be for the balance of 2008 and one half of the year 2009 outstanding stock.

In addition, patronage eligible customers will get notice of a Domestic Production Deduction (IRS Sect. 199) that they can use on their 2018 tax return. This will total \$3 million. PrairieLand FS is unable to use it and we are allowed to pass it thru to our customers. This deduction may allow our patron to reduce their taxable incomes which in turn make reduce their tax liability. This notice will be mailed in early December.

PrairieLand FS, Inc. is a Federated Cooperative locally owned and controlled, based in Jacksonville, IL. PrairieLand FS proudly serves patrons in Central and West Central Illinois and Northeast Missouri.

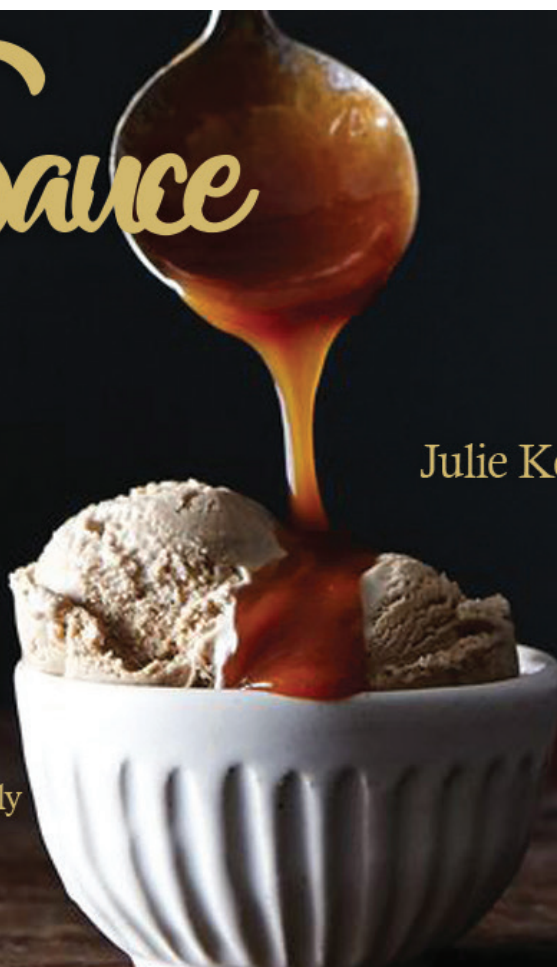
<u>Product</u>	<u>Patronage Rate</u>
Dieselelex Tank Wagon	\$.05 per Gallon
Dieselelex Bio Tank wagon (B11-B20)	\$.10 per Gallon
#1 and #2 Fuel Tank Wagon	\$.02 per Gallon
#1 and #2 Bio Tank Wagon (B11-B20)	\$.07 per Gallon
Transport #2 fuel and Dieselelex	\$.01 per Gallon
Transport #2 and Dieselelex Bio (B11-B20)	\$.06 per Gallon
Dry Fertilizer (excluding Urea) and NH3	\$10.00 per Ton
Urea and Nitrogen	\$ 3.00 per Ton
Seed Corn and Seed Beans	4.0%
N-Serve	2.0%
Chemicals	2.0%
Service Income	1.0%
LP Gas	\$.04 per Gallon

Caramel Sauce

1 Cup Brown Sugar
1/2 Stick Butter (4 tbsp)
1/2 c Half & Half or Cream
(Cream will make it thicker)
1 Tbsp Vanilla
Pinch of Salt

Makes approximately 3-4 oz
Keep refrigerated. In a glass jar.

Mix all ingredients in a medium saucepan over medium to low heat. Cook while whisking gently for 5 to 7 minutes until thick. Turn off heat. Serve warm or refrigerated.



From:
Julie Kern Morrison



THERE'S REALLY SOMETHING FOR EVERYONE

With membership so affordable, it's hard to believe there's something for everyone. Take a closer look at the 14 categories. **Over 302,000 discounts** available to you. Search our platform to find savings that fit your needs.

- Attractions & Tours
- Automotive
- Cellular Phones
- Concerts & Events
- Electronics
- Everyday Living
- Fashion & Beauty
- Gifts & Flowers
- Health & Wellness
- IL Farm Bureau Exclusives
- Movie Tickets
- Restaurants
- Travel
- Unique Experiences



Not a Farm Bureau member?
Contact us today for more information!
(309) 937-2411



ilfb.abenity.com



Sangamon County Farm Bureau® Foundation

Donations Help Build Legacy for Youth

Since its beginning in 2007, the Sangamon County Farm Bureau Foundation has strived to advance its mission, "To Support Education, Research, and Activities that Benefit Sangamon County Farms and Agriculture." Efforts such as these do not come without cost and we're proud of the monetary support our members and the community have entrusted in the Foundation in order to help it achieve those goals.

Since 2011 college and technical school students of Sangamon County Farm Bureau members have received over \$36,000 in scholarships to help further their education. And while we're proud to have been able to award these scholarships, there's always more need than there are funds to address them.

But one person can and does make a difference. Which happened recently when a donation of \$10,000 was made by Keith Cravens

of Buffalo (and Past President of SCFB) as a memorial to his parents, Forrest and Wilma Cravens. Farm Bureau and the Foundation are so very grateful to Keith for his overwhelmingly generous gift. The funds will be utilized to generate interest income that is used to fund our scholarship fund.

While large gifts are so special, the smaller ones from many members are just as important and can really help provide the majority of funding for scholarships. Donations of \$100 or more are recognized on our donor wall which is prominently displayed in the Farm Bureau lobby.

If you would like to donate to the Sangamon County Farm Bureau Foundation you can do so as a tax deductible contribution. So as you're contemplating year end charitable donations, please consider the foundation for one of your potential gifts.





The occupation of a farmer holds one of the highest rates for depression and suicide of any industry, and it's on the rise. No farmer should have to suffer alone and feel there's no one that can help.

Everyone knows that farmers are hard working and proud people, which makes them all the more unlikely to seek assistance or confide in another person. But that's exactly what they need to do. It doesn't mean they are weak or a failure. It just means they have more than they can handle at the moment and may just need some guidance.

If you or someone you know appears to have more than they can handle, do them or yourself a favor and get help or talk to someone confidentially. Sangamon County Farm Bureau staff are available to help find resources to get answers or just lend an ear if a farmer needs to talk. Contact the office or just stop by. We're not experts, but we do know how to listen and find appropriate resources for you.

MyIFB



Now YOU are in charge of your Illinois Farm Bureau membership.

The MyIFB website will make joining & managing your membership easier!

- Join Sangamon Farm Bureau
- Renew or Reinstate your membership
- Access member benefits
- Manage your membership & information
- And much more!



**For more information contact
Sangamon County Farm Bureau
(217) 753-5200**

www.sangamonfb.org



If You Take Action Today You Could WIN Tomorrow!!!!

**We're giving away an
Apple iPad!**

Become a part of FB ACT and you could win.
Learn more below and join by reading below.



Every year, more and more legislation and regulations are considered and may impact the way you farm. But thanks to your membership in Sangamon County Farm Bureau, you don't have to tackle them alone. Periodically (4 or 5 times a year on average) we send out an action request to our members. An action request is our mechanism to ask members to make a call or send an electronic letter to elected officials asking them to vote for or against a piece of legislation or regulation. We give you easy to follow instructions on who to contact and a sample of what you should say or write.

How Do I Get Started?

To be a part of protecting your farm, sign up for FB ACT text alerts by texting FARM to 52886. It's really just that easy!

How Do I Win The iPad?

Every time you respond to an action request you'll be entered into a drawing (if you report your contact to Sangamon County or Illinois Farm Bureau). Each additional contact you make to other legislators or regulators that are targeted in the action request generates another entry in the drawing. So make those calls and win!!

The drawing will be held May 31st, 2019. The winner will be notified by phone or in writing.

SANGAMON COUNTY FARM BUREAU
 MAKING GRASSROOTS WORK FOR YOU
 1918 100th Anniversary 2018



Top Left:
 AFBF
 President
 Zippy Duvall
 with Orion
 Samuelson

Left: Current
 SCFB
 Directors &
 Committee
 Chairs with
 Orion.



Top Left: SCFB President Phil Sidles with daughter Peyton Sidles welcoming everyone to the celebration.

Top Right: All of the past Sangamon County Farm Bureau Presidents in attendance.

Right: Past Staff with Orion Samuelson

Bottom Left: SCFB Manager Jim Birge, AFBF President Zippy Duvall, Finance and Membership Administrative Assistant Arika Mason, and SCFB President Phil Sidles.

Bottom Right: Tractor Contest Winner Leahy Bennett with his John Deere 4010 and Young Leader Committee Chair Stephen Prather.



anniversary apparel is here!



A

Item	Size	Quantity	Price	Total
A. Hooded Sweatshirt	_____	_____	\$ 35.00	_____
B. T-Shirt	_____	_____	\$ 10.00	_____
** Runs small, we suggest sizing up.				
C. Shipping			\$ 5.00	_____

ORDER TOTAL: _____

Name _____ Phone: _____
 Address _____ Email address: _____
 City _____ State _____ Zip _____

When orders are ready to be picked up I would like notification via:

Email Text Phone call

All items that are not being shipped must be picked up at the Sangamon County Farm Bureau.

B



If you would like your items shipped to you,
 please add
 shipping onto your order total.

Please make checks payable to the Sangamon
 County Farm Bureau.

Please return this form with your payment to the:
 Sangamon County Farm Bureau
 2631 Beechler Ct.
 Springfield, IL 62703

help celebrate 100 years with us!

anniversary items in stock!



Item	Quantity	Price	Total
A. 16 oz. Tervis Cup with lid	_____	\$ 15.00	_____
B. Shipping		\$ 5.00	_____

ORDER TOTAL: _____

Name _____ Phone: _____
 Address _____ Email address: _____
 City _____ State _____ Zip _____

When orders are ready to be picked up I would like notification via:
 ___ Email ___ Text ___ Phone call

All items that are not being shipped must be picked up at the Sangamon County Farm Bureau.

Please make checks payable to the Sangamon County Farm Bureau.

Please return this form with your payment to the:
 Sangamon County Farm Bureau
 2631 Beechler Ct.
 Springfield, IL 62703

help celebrate 100 years with us!

Sangamon County Farm Bureau
2631 Beechler Court
Springfield, IL 62703



MyersRice
Auction & Realty

115 Chatham Rd. • Springfield, IL 62704
Office: (217) 787-3200 • Toll Free: (888) 600-FARM

Real Estate Brokerage • Auctions • Farm Management

Paul Rice

Auctioneer/Broker

A Certified Estate Specialist Auctioneer

www.myersrice.com



REFER A CUSTOMER and earn credit!

\$50 **\$50**
FOR YOU FOR THEM

You have options and switching
propane suppliers is easy.

CALL PRAIRELAND FS
888-978-7637



**ADVERTISE
WITH US**

**CALL 217-753-5200 TO
ADVERTISE WITH US!**